

Making HTL Covid Secure

A guide to the steps taken at Holy Trinity Church



What we have done

In the past few months we have been working to make our facilities Covid Safe in line with Government and Church of England guidance. We've had our Health and Safety consultants inspect all of our plans until we are satisfied that our buildings will be a safe place for people to use once again. In this document you can read about the steps we have taken, and what we are asking of you.

One thing to remember in all of this is that our mission is to see people come to Jesus. Despite all the precautions that we are taking, we still exist to help people find their way back to God. So we hope to see people invited to church and for people to come to faith in Jesus!

We have...

- We have carried out a full risk assessment and you can find it on our website. We have put together a core list of controls and protocols that direct how we will carry out our different activities. Then, if a certain activity merits further controls, we have written those up and implemented them too.
 - We have enabled staff to work from home as much as they can.
-
- We have moved furniture around and taken much away so that we can enable social distancing to happen.
 - We have added signage to help remind people about this.
 - We have installed hand sanitizer stations throughout the two buildings.
 - We have purchased specific cleaning agents that are highly effective against coronaviruses. We are cleaning shared touch points (e.g. door handles and chairs) between sessions.
 - We have implemented systems to record people's details for the NHS Test and Trace system.
 - We have closed off areas that are not being used.

Your role

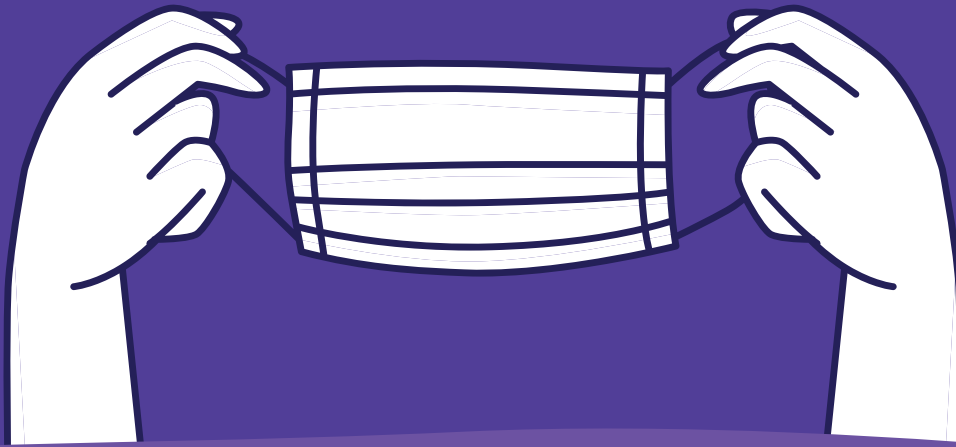
- If you are experiencing Covid-19 symptoms, then please do not come to church. They are:
 - new continuous cough
 - fever/high temperature
 - loss of, or change in, sense of smell or taste
 - If you are experiencing any of these, please stay home and order yourself a test.
-
- If you begin to experience symptoms whilst here, please return home immediately and let us know.
 - Please use the toilet at home before you come out – our toilet facilities are available but we would like to minimize their use as much as possible.
 - Please clean your hands thoroughly when you arrive – this means either using the hand sanitizer available or washing with soap in the toilets.
 - Please maintain social distance from other households/bubbles. We are sorry this means that hugging and shaking hands is not allowed between households/bubbles, nor is sitting right next to each other.

Your role

- Please wear a face covering properly – this is a requirement under law that you do so in a Place of Worship unless you have an authorized exemption. A visor is an alternative if you cannot wear a face mask.
 - Please avoid walking around the building unnecessarily. Access to children's group areas will be restricted.
 - Please avoid singing and raised voices – we know this will be difficult.
-
- Please limit social interactions outside your bubble within the church buildings.
 - Once the service has finished, please leave as directed by the service leader. We specifically ask that people do not wait around the church buildings. Sadly, we will not be able to offer our usual after-church coffee.
 - Please also remember to have high levels of grace in our relationships with others. If a member of staff or service team ask you to do something, please respond in kindness.

How to Safely Wear a Medical Mask

Source: World Health Organization



Do's

- ✓ Thoroughly wash hands with soap and water before touching the mask
- ✓ Check the mask for any tears or holes
- ✓ Find the top side where the metal piece or stiff edge is
- ✓ Ensure that the colored side faces outwards
- ✓ Place the metal piece/stiff edge over your nose
- ✓ Cover your mouth, nose, and chin.

Do's

- ✓ Adjust the mask without leaving gaps on the side
- ✓ Avoid touching the mask
- ✓ Use the straps to remove the mask
- ✓ Keep the mask away from you or any surface when removing it
- ✓ Discard the mask immediately after use, preferably into a closed bin
- ✓ Wash your hands after



Dont's

- ✗ Don't use a ripped or damp mask
- ✗ Do not wear the mask only over mouth or nose (both must be covered)
- ✗ Do not wear a loose mask
- ✗ Do not touch the front of the mask
- ✗ Do not do other things that will require touching the mask
- ✗ Do not leave used mask within the reach of others
- ✗ Do not re-use the mask

Parents

At both the afternoon Spoken Word and Music services, we will have provision for Bubbles & Splash (in a joint session), Wave and Impact aged children (school years R-9). You will have been allocated one of those services to attend and we ask that you be consistent with this to maintain the social bubbles. We recognise that arrangements can change so if you need to change please talk to us.

Church of England guidance currently prohibits us from providing sessions for children aged 0-3 years – if you are coming to a service with children in this age bracket then they will need to remain with you at all times during the service. We are sorry that running around will not be allowed.

We need you to drop off your child(ren) to their groups 5 minutes before the service starts:

- Bubbles and Splash children should be dropped off at the Turner Street entrance. (Tots aged 3 upwards can join this group in the first service). You will then need to walk around the outside of the building to the main entrance.
- Wave and Impact children should be dropped off at the driveway entrance at Trinity Hall.

Parents

Only ONE parent should drop off their child(ren) to a group and that same parent should be the person collecting at the end of the session after the service has finished.

If you have two parents and two children, you can double team of course! That way you can drop off and collect both children at the same time.

Activities have been chosen that comply with the guidance from the Church of England and National Youth Council. Each group will have no more than 15 children plus leaders. We will not be able to provide any drinks or snacks either.

We will ask parents to send their children with basic items when needed, as we cannot share resources. Typically, this means that you will need to send your child with a pencil and a Bible (for those in Wave/Impact). When the activity requires it, each child will have their own activity space.

